

**ELECTRO WIRE™**

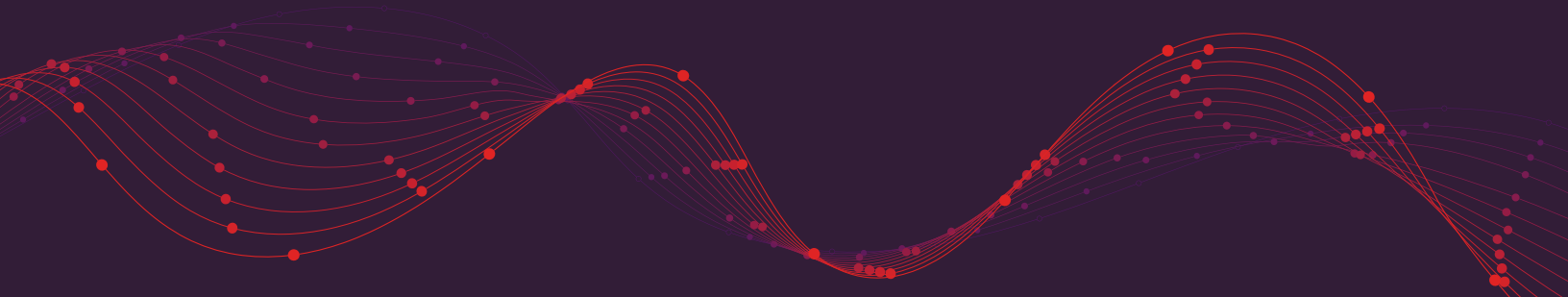
TELECOM SOLUTIONS

A GCG COMPANY



**INVENTORY MANAGEMENT & LOGISTICS**

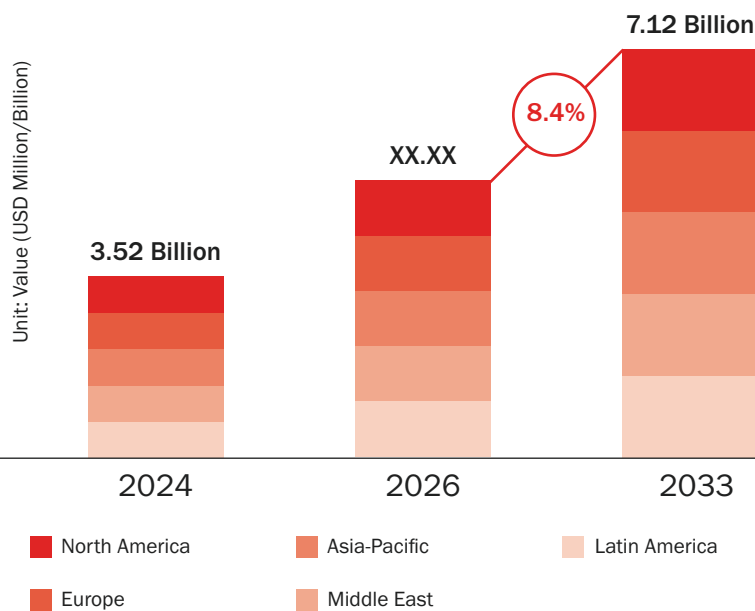
# **Streamlining field readiness in a high-velocity market**



As telecom deployment cycles accelerate and supply chain volatility persists, Inventory Management & Logistics (IML) has emerged as a critical strategy for ensuring material availability where and when it's needed. For carriers, integrators and contractors, IML offers a proven path to reduce field friction, improve cash flow and maintain deployment velocity without overwhelming internal logistics teams.

### Market growth

Global vendor managed inventory (VMI) market size and scope



**8.4%**

CAGR from 2026 to 2033

VMI market revenue reached \$3.5 billion in 2024 and is projected to hit \$7 billion by 2033, growing at 8.4% CAGR.

Source: www.verifiedmarketreports.com



## What is IML?

Inventory Management & Logistics is a supply chain management strategy through which suppliers take responsibility for managing and replenishing inventory levels at customer locations. Instead of telecom operators placing purchase orders, vendors monitor usage and stock levels, making restocking decisions based on predefined service levels and demand forecasts.

## IML in the telecom context

In telecom applications, distributors or suppliers maintain inventory levels using real-time consumption data, project forecasts and replenishment triggers. This approach shifts inventory planning and stockout management from contractors and integrators to a collaborative, data-driven partnership.

With geographically distributed networks and frequent infrastructure upgrades, telecom operators often face a choice between overstocking (capital inefficiencies) or stockouts (delayed rollouts and maintenance).

### Common telecom IML applications include:

- Stocking fiber, conduit, enclosures and hardware at regional hubs or jobsite trailers
- Replenishing kits or assemblies based on usage rates
- Providing inventory visibility through dashboards or APIs

IML allows telecom providers to leverage equipment vendors and distributors who forecast and replenish inventory using real-time data from warehouses, field service hubs and project pipelines. This ensures critical infrastructure components are available when and where needed.

## Why IML matters now

Telecom networks face constant pressure to evolve, supporting 5G rollouts, fiber expansion, edge computing and IoT proliferation. In this environment, inventory shortages or supply chain misalignment can derail major capital projects and damage customer satisfaction.

With BEAD and other funding programs driving aggressive build schedules, material delays carry unprecedented costs. IML mitigates these risks by:

- **Reducing** lead time variability
- **Minimizing** over-ordering and excess inventory
- **Improving** field crew productivity through consistent material availability
- **Freeing** working capital by shifting inventory ownership until consumption

IML also enables just-in-time delivery models, particularly valuable in urban or remote deployments with limited storage capacity.

## Proven IML benefits



**40%**  
reduction in lead times<sup>1</sup>



**25%**  
increase in fulfillment accuracy<sup>1</sup>

<sup>1</sup> inFlow Blog: How Vendor Managed Inventory (VMI) Can Reduce Lead Times

## Keys to IML success

Effective Inventory Management & Logistics implementation requires alignment across operations, procurement and field teams. Best practices include:

- Clear consumption tracking through barcode scanning or IoT-enabled bins
- Collaborative forecasting between project managers and suppliers
- Defined service levels and replenishment thresholds
- System integration with ERP or project management platforms for real-time visibility

Leading distributors, such as Electro Wire Telecom Solutions, often bundle IML with kitting, staging and logistics services, creating comprehensive material management solutions.



## Strategic advantages for integrators and contractors

Inventory Management & Logistics delivers substantial strategic value beyond supply chain efficiency. In a competitive market where speed, reliability and scale determine contract wins and deployment success, IML becomes a competitive differentiator.

### Key strategic benefits

01

**Enhanced** demand forecasting through real-time consumption data

02

**Accelerated** geographic scaling capabilities

03

**Reduced** material-related delays and rework

04

**Improved** financial predictability and reporting

05

**Greater** focus on core competencies like engineering and installation

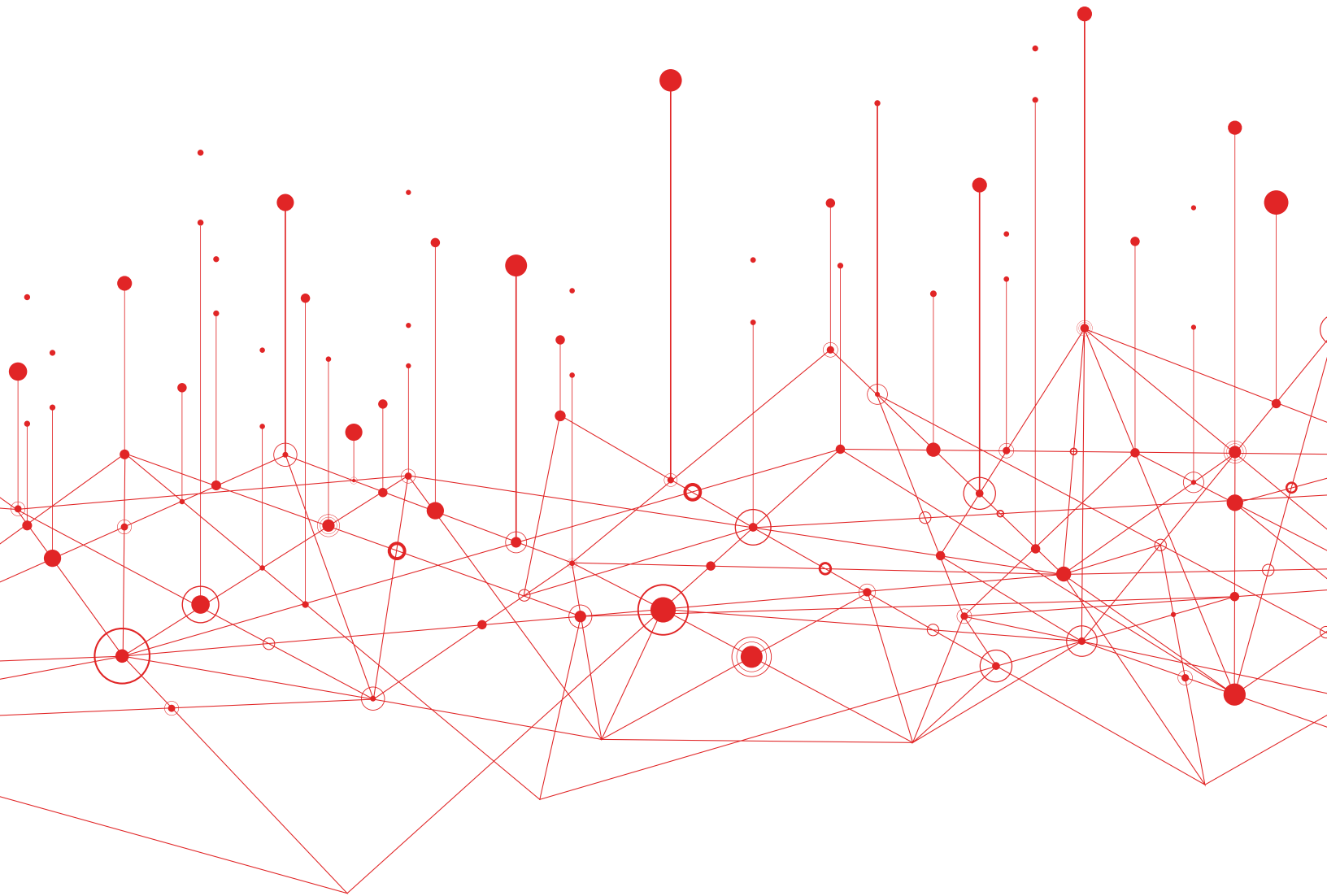
06

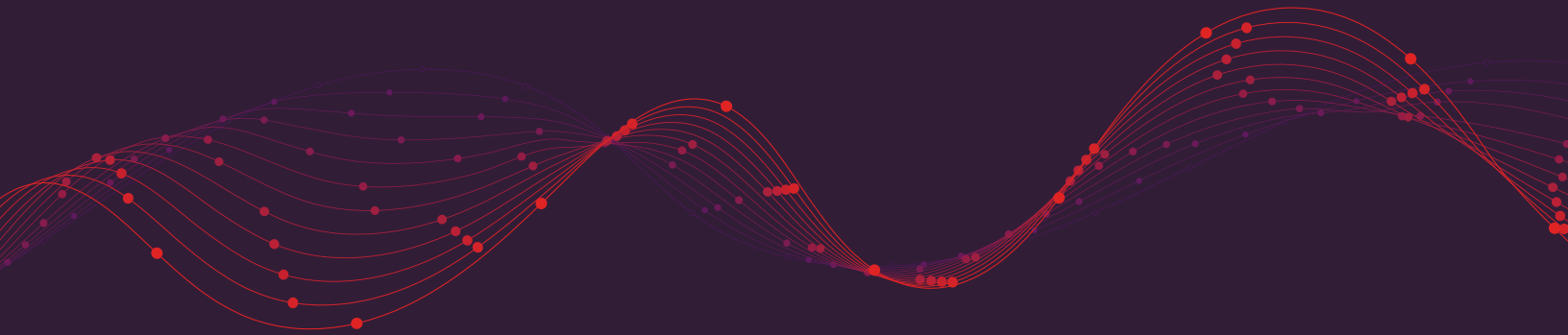
**Strengthened** supplier partnerships

## Looking ahead

As networks become increasingly distributed and deployment timelines compress, IML will play an expanding role in enabling agile, scalable operations. Contractors and integrators who embrace this model and build strong supplier partnerships will be better positioned to meet tomorrow's telecom networking infrastructure demands.

The time is now for telecom leaders to rethink their supply chain strategies and integrate IML as a cornerstone of operational excellence.





## Ready to optimize your inventory management?

Discover how Electro Wire's inventory management and logistics solutions can support your business.

Call (877) 424-9473 or visit [electrowire.com](http://electrowire.com)

**ELECTRO**  **WIRE™**

TELECOM SOLUTIONS

A GCG COMPANY